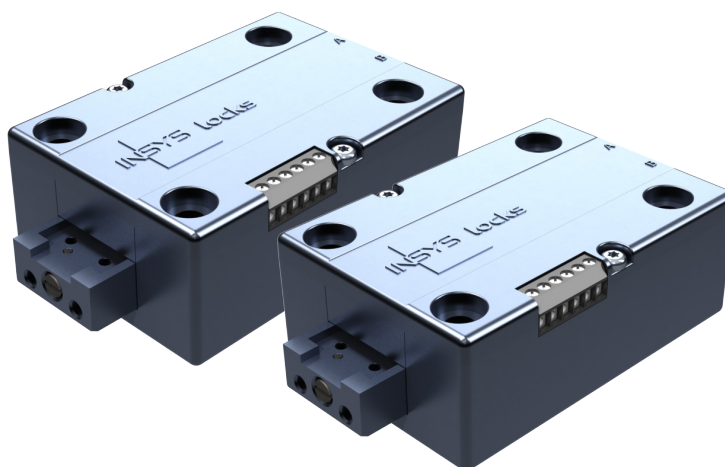


Fully automatic lock system of VdS class 4/D

TwinLock D900 Business



SECURITY CLASS

4 (CEN D)

Functions	TwinLock D9xx Business
Motor lock / pull-push 50N	9xx series
Redundance (electronic + mechanical)	■
Multi-lock operation	■
Security class VdS/ECBS	4/D
Classical FlatControl keypad	■
Individual user matrix	■
Manager code/system code	■
Master code	■
User code	99
Override code	■
Dual code (opening/configuration)	■
Parallel code (only for 2/3 locks)	■
Protocol/date and time	3,000
Timer programmes	■
Partial blocking times	■
Unlocking/opening delay	■
Blocking time	■
Manipulation block	■
Automatic locking	■
Emergency power supply cable via 9V battery (battery not included in the scope of delivery)	■
Power supply unit connection via TwinConnect	■
TwinXT hold-up connection (VdS C) with duress alarm, triggering/cancelling alarms (VdS C) and lock status	■
Ext. unblocking/ blocking	■
Door contact connector	■
Configuration/audit	Chip card

Highlights

- VdS/ECBS Class 4/D
- Only two deadbolts required for safe doors of Class XI - XIII
- Flat, compact control unit
- Redundant electronic and mechanical technology
- Freely configurable user matrix and groups
- Wide range of opening options and combinations

Optional


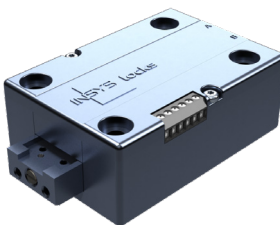




- TwinAlarm arming device (VdS C:) for enabling and disabling an EMA and ancillary control equipment
- TwinComm USB: PC software for configuration and administration of the lock system for extended functions

Technical data



TwinLock D900 Business

System components

Standard

 <p>Control unit FlatControl Business</p>	 <p>Lock INSYS Lock D900</p>	 <p>TwinXT / TwinXT small Extension unit and blocking device</p>	 <p>TwinConnect small Central power supply connection</p>
 <p>Power supply unit 12 V</p>	 <p>Emergency power supply cable</p>		

Optional

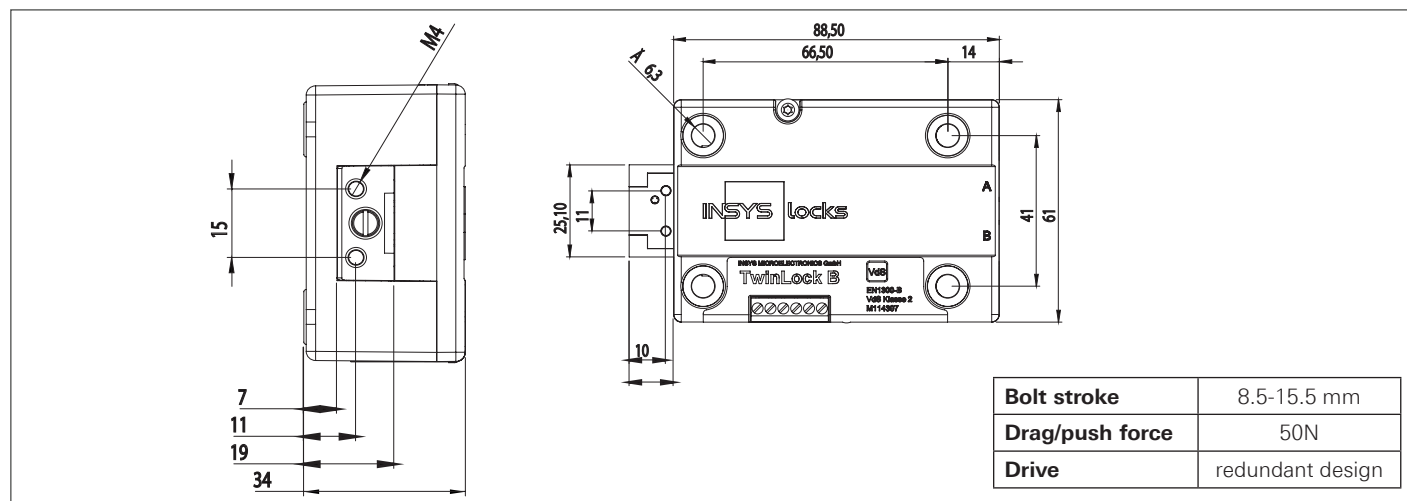
 <p>Switching device TwinAlarm For enabling and disabling an EMA and ancillary control equipment</p>	 <p>TwinComm configuration set (USB card reader, TwinComm software, TwinCard configuration II, licence card) for configuration and administration</p>		
--	---	--	--

Technical data

TwinLock D900 Business

Technical installation

INSYS Lock D900 - deadbolt



FlatControl - operating terminal

